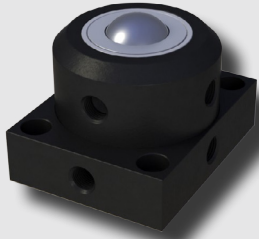


# KABL-S series



## Features

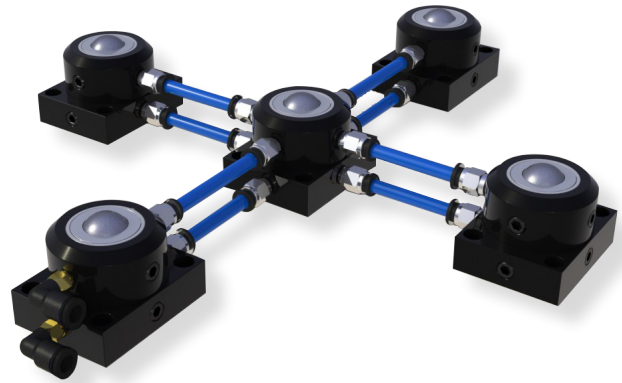
- New multi-purpose product
- Easy to apply and install according to working environments. (Capable fitting on bottom part, totally 9 fitting ports Rc(PT 1/8))
- Single type product capable of forced ascent and descent.
- Applicable to a wide range of environments (including clean room).
- Improved wearing resistance with ball made of S12(Bearing steel) material. (Acetal ball is available for scratch proof)

## Specifications

Model	Ball specifications	Weight (kg)	Ascent force (kgf)	
			5 kgf/cm <sup>2</sup>	6 kgf/cm <sup>2</sup>
KABL-S	1" (25.4)	0.5	68	82

\* Specifications and dimensions are subject to change without prior notice.

## Application



## Dimensions

