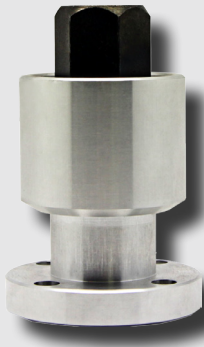


# SRJ-P series



SRJ 5000A-P

### Features

- Application: Press machine
- Low rotating resistance
- Non-lubricated type

### How to Order

SRJ 5000 A - P  
 ①                      ③

#### ① Body size

	Port size	
	Rc(PT) 3/4	Rc(PT) 1
5000	•	
6000		•

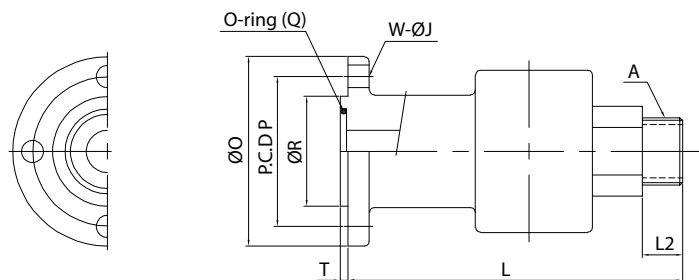
#### ③ Fluid

A	Air
---	-----

### Specifications

Max operating pressure	9.9kgf/cm <sup>2</sup>
Max temperature	80℃
Max. number of rotations	1200rpm
Fluid	Air
Material	Aluminium

### Dimensions



Unit:mm

Model	A	J	L	L2	O	P	Q	R	T	W
SRJ 5000A-P	Rc(PT)3/4	9	134	21	76	60	P28	44	3	4(3)
SRJ 6000A-P	Rc(PT)1	11	147	23	84	67	P38	50	3	4(3)